



Těsnění Roxtec RS Ex s SL RS

Těsnění s certifikací Ex k přivaření určené pro jednotlivé kabely nebo trubky.

Roxtec RS Ex s SL RS je těsnění určené pro více kabelů a trubek s certifikací pro použití v oblastech Ex e a Ex tb. Má kovovou průchodku a je určeno pro jednotlivé kabely nebo trubky. Vstupní těsnění má dvě půlky s oddělitelnými vrstvami, jež umožňují přizpůsobení pro kabely a trubky různých rozměrů. Průchodka se ke konstrukci přivařuje.



- Odolné proti hlodavcům
- Rychlá a snadná instalace

Vlastnosti výrobku



Protipožární



Vodotěsné



Plynotěsné



Certifikace Ex

Struktura instalace



Kov

Typ montáže



Přivaření

Specifikace a certifikáty

Protipožární ochrana

- Nehořlavost TŘÍDY A podle organizace IMO a Mezinárodních předpisů pro postupy požárních zkoušek, 2010
- TŘÍDA H v souladu s IMO 2010, kódu FTP + křivka požárního zatížení HC
- Tryskový požár podle ISO 22899-1 a OTI 95634

Těsnost

- Plynotěsnost: 2,67 baru (katastrofický)
- Vodotěsnost: 4 baru (katastrofický)

Podporuje

- Certifikace Ex

Údaje o izolačních komponentách

Těsnící komponenty



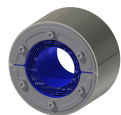
Souprava RS W Ex

Podrobné informace najdete na stránkách www.roxtec.com.

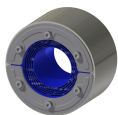


Konfigurované soupravy vstupů

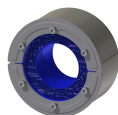
mm/kg



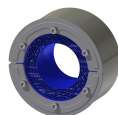
RS 100 W Ex AISI316
WOC/PRIMED



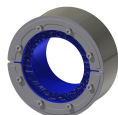
RS 100 W Ex AISI316
WOC/AISI316



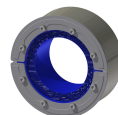
RS 125 W Ex AISI316
WOC/PRIMED



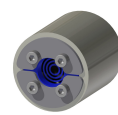
RS 125 W Ex AISI316
WOC/AISI316



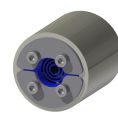
RS 150 W Ex AISI316
WOC/PRIMED



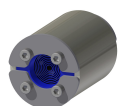
RS 150 W Ex AISI316
WOC/AISI316



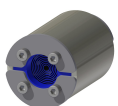
RS 25 W Ex
AISI316/PRIMED



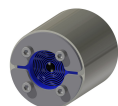
RS 25 W Ex
AISI316/AISI316



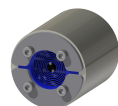
RS 43 W Ex
AISI316/PRIMED



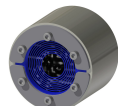
RS 43 W Ex
AISI316/AISI316



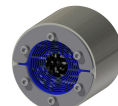
RS 50 W Ex
AISI316/PRIMED



RS 50 W Ex
AISI316/AISI316



RS 75 W Ex
AISI316/PRIMED



RS 75 W Ex
AISI316/AISI316

Název	Konfigurace	Rozměry otvoru Ø	Hmotnost Typ. č.
RS 100 W Ex AISI316 WOC/PRIMED	1x (48.0-70.0)	100 - 102	2 EXRSW0100102112
RS 100 W Ex AISI316 WOC/AISI316	1x (48.0-70.0)	100 - 102	2.3 EXRSW0100102121
RS 125 W Ex AISI316 WOC/PRIMED	1x (66.0-98.0)	125 - 127	2.9 EXRSW0125102112
RS 125 W Ex AISI316 WOC/AISI316	1x (66.0-98.0)	125 - 127	3.2 EXRSW0125102121
RS 150 W Ex AISI316 WOC/PRIMED	1x (93.0-119.0)	150 - 152	3.2 EXRSW0150102112
RS 150 W Ex AISI316 WOC/AISI316	1x (93.0-119.0)	150 - 152	3.2 EXRSW0150102121
RS 25 W Ex AISI316/PRIMED	1x (3.6-12.0)	25 - 26	0.17 EXRSW0250002112
RS 25 W Ex AISI316/AISI316	1x (3.6-12.0)	25 - 26	0.24 EXRSW0250002121
RS 43 W Ex AISI316/PRIMED	1x (4.0-23.0)	43 - 45	0.6 EXRSW0430002112
RS 43 W Ex AISI316/AISI316	1x (4.0-23.0)	43 - 45	0.6 EXRSW0430102121
RS 50 W Ex AISI316/PRIMED	1x (8.0-30.0)	50 - 52	0.9 EXRSW0500002112
RS 50 W Ex AISI316/AISI316	1x (8.0-30.0)	50 - 52	0.9 EXRSW0500002121
RS 75 W Ex AISI316/PRIMED	1x (24.0-54.0)	75 - 77	1.5 EXRSW0750002112
RS 75 W Ex AISI316/AISI316	1x (24.0-54.0)	75 - 77	1.5 EXRSW0750102121
RS 100 W Ex AISI316/PRIMED			2.2 EXRSW1000002112
RS 100 W Ex AISI316/AISI316			2.3 EXRSW1000002121
RS 125 W Ex AISI316/PRIMED			3.2 EXRSW1250002112
RS 125 W Ex AISI316/AISI316			3.2 EXRSW1250002121

The product information provided by Roxtec does not release the purchaser of the Roxtec system, or part thereof, from the obligation to independently determine the suitability of the products for the intended process, installation and/or use.

Roxtec gives no guarantee for the Roxtec system or any part thereof and assumes no liability for any loss or damage whatsoever, whether direct, indirect, consequential, loss of profit or otherwise, occurred or caused by the Roxtec systems or installations containing components not manufactured by an authorized manufacturer and/or occurred or caused by the use of the Roxtec system in a manner or for an application other than for which the Roxtec system was designed or intended.

Roxtec expressly excludes any implied warranties of merchantability and fitness for a particular purpose and all other express or implied representations and warranties provided by statute or common law. User determines suitability of the Roxtec system for intended use and assumes all risk and liability in connection therewith. In no event shall Roxtec be liable for indirect, consequential, punitive, special, exemplary or incidental damages or losses.

The Roxtec products are offered and sold in accordance with the conditions of the Roxtec General Terms of Sales. The latest version of the Roxtec General Terms of Sales can be downloaded from <https://www.roxtec.com/en/about-us/about-roxtec/general-terms-of-sales/>

We reserve the right to make changes to the product and technical information without further notice. Any errors in print or entry are no claims for indemnity. The content of this publication is the property of Roxtec International AB and is protected by copyright.

This document was generated on: 2024-04-06